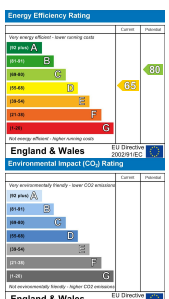


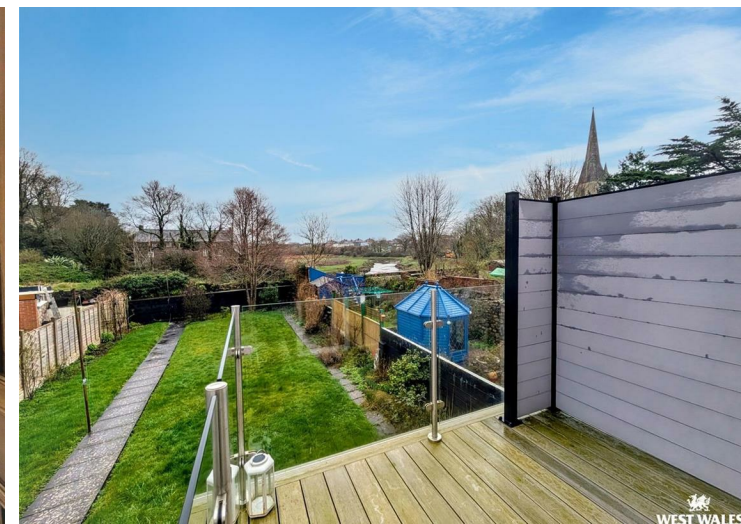
**Henblas 23 Bridge Street, Kidwelly, Carmarthenshire, SA17 4UU**

- TERRACED HOUSE
- KITCHEN/DINER
- BATHROOM AND TWO EN-SUITES
- VIEWS OVER THE RIVER GWENDRAETH
- HEATING - GAS
- TWO RECEPTION ROOMS
- UTILITY ROOM
- ENCLOSED REAR GARDEN
- TOWN CENTRE LOCATION
- EPC - D

**£160,000**

COMPUTER-LINKED OFFICES THROUGHOUT WEST WALES and Associated office in Mayfair, London





Looks can be deceiving – viewing is highly recommended to fully appreciate the size and versatility this well-presented three-bedroom terraced home has to offer, ideally situated in the heart of the historic town of Kidwelly.

Arranged over two floors, the property provides flexible accommodation including an entrance porch leading into a hallway, a reception room which could alternatively be used as a bedroom, and a main lounge featuring a log burner, creating a warm and inviting focal point. To the rear, the kitchen opens through to a separate dining room, ideal for both everyday living and entertaining, with French doors leading directly onto the enclosed rear garden.

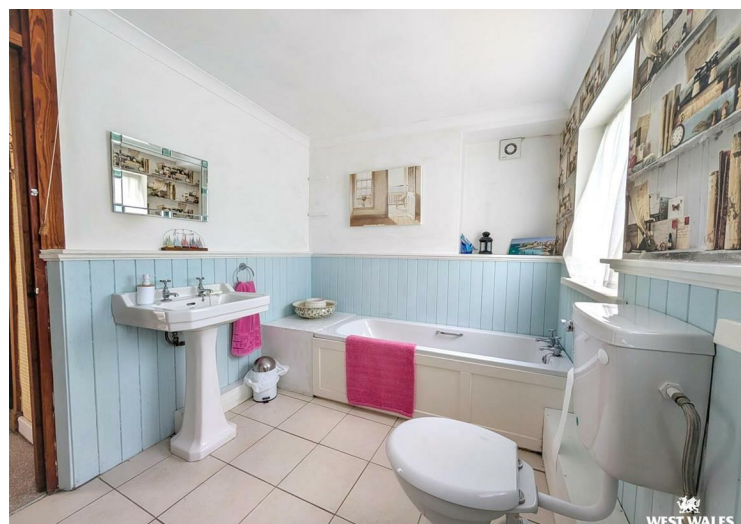
The garden itself is a particularly appealing feature, offering a private and secure outdoor space with a patio area perfect for al fresco dining and a lawn ideal for children, pets, or simply relaxing. This low-maintenance yet versatile outdoor setting enhances the overall lifestyle appeal of the home, providing a seamless extension of the living space during warmer months.

A utility room and family bathroom complete the ground floor.

To the first floor are two bedrooms, both benefiting from en-suite facilities, with one enjoying access to a balcony overlooking the River Gwendraeth. The property also features a dressing room/office, currently utilised as a bedroom, providing valuable additional and versatile accommodation.

Kidwelly is a sought-after historic township, renowned for its castle, and offers a range of day-to-day amenities including shops, a junior school, places of worship, eateries and a mainline railway station with links to London Paddington.

The property is located just over a mile from Pembrey Country Park, known for its sandy beach, cycle track, ski slope, motor racing centre and woodland walks. The larger towns of Carmarthen and Llanelli are both approximately nine miles away, offering a wider range of shopping, schooling and transport links, including access to the M4.



### DIRECTIONS

From our office in Carmarthen continue onto Llammas Street. Follow the road as it leads you out of the town centre, then pick up signs for the A484 toward Llanelli. Join the A484 and stay on it for several miles. As you approach Kidwelly, follow signs for the town centre and keep on the main road as it becomes Causeway Street. Continue straight ahead, then turn onto Bridge Street. Follow Bridge Street through the town, and you'll see our website [www.westwalesproperties.co.uk](http://www.westwalesproperties.co.uk) in our TV channel to view our location videos about the area.